



Service Receivables and Inventory — Add-On Module*

Better manage the complexity of your service business with the Service Receivables and Inventory module for Sage Master Builder.

The Service Receivables and Inventory module provides complete service management and inventory functionality that integrates with Sage Master Builder accounting and estimating. Avoid the extra work and mistakes that can occur when maintaining multiple service management, accounting, estimating, and inventory systems. The integration between modules gives you real-time, up-to-the-minute inventory management.

Service Receivables

The Service Receivables portion of this module makes it easy to handle service contracts, service routes, dispatch, on-call work orders, quotes, and point-of-sale or billing of service work materials.

Save time by efficiently managing work orders without entering duplicate information into invoices and dispatching. Easily turn your estimates into service work orders with the Estimating Basic module. Quickly review information about equipment installed at multiple client sites. Schedule service agreement and warranty work. Manage your service technicians: assign work orders based on client location, priority, and technician load and expertise.

Because Service Receivables fully integrates with Inventory, you can keep inventory up to date in real time based on service work completed.

*Add-on modules are sold separately.

BENEFITS

Stay on top of inventory when service work is performed with full integration between Service Receivables and Inventory.

Bill items individually or as part of an assembly for added flexibility.

Use the flat-rate billing option to create and print your own price book for your technicians.

Easily keep your entire system updated by using the same parts and assemblies databases for estimating and for service.

Directly import hours from your service work orders with full integration to Payroll.

Run truck restocking from work orders completed each day so that your warehouse staff can restock trucks at night.

11-2 Work Orders/Invoices/Credits C:\WB7\Sample Comany_Sage_v11.2\Period 6

Exit File Edit Options Post View Help

Order# 1155 Invoice# 5 Lock Edit Status 7 - Work Order

Date 06/16/2006 Description Kitchen Sink and Fiberglass Shower

Client# 136-LRS, Inc. Job Type 5 - Service

Location and Dispatch Invoice Details Insurance Information

Source 0 - None Invoice Date Payment

Tax District Due Date Card/Chk.#

Reference# Disc Date Cardholder

Client PO# Resale # Exp Date

Row	Assembly#	Part#	Description	Alpha Part#	Unit	Quantity	Price	Ext. Qty
1	3202 P		Kitchen Sink (Single Stainless Steel)		Each	1.0000	250.000000	1.0000
2		15067	33"x22" Stainless Steel Kitchen Sink		Each	1.0000		1.0000
3		11412	1/2 Hp Garbage Disposal		Each	1.0000		1.0000
4		15082	Kitchen Faucet w/Sprayer		Each	1.0000		1.0000
5		15321	1/2" Angle Stop Valve		Each	2.0000		2.0000
6		15331	1/2" Flex Supply Line		Each	2.0000		2.0000
7		15167	1-1/2" P-Trap Brass/Chrome		Each	1.0000		1.0000
8		15280	Plumbers Putty		Pound	0.1375		0.1375
9		221	Plumbing Labor		MinHrs	2.2000		2.2000
10	3242 A		136" Fiberglass Shower		Each	1.0000	500.000000	1.0000
11		15106	36"x36" Fiberglass Shower w/Door		Each	1.0000		1.0000
12		15089	Shower Faucet		Each	1.0000		1.0000
13		15112	Shower Head Goose Neck		Each	1.0000		1.0000
14		15113	Shower Head		Each	1.0000		1.0000
15		19508	1/2" Cap Copper		Each	4.4000		4.4000
16		15162	2" CI P-Trap		Each	1.0000		1.0000
17		221	Plumbing Labor		MinHrs	2.5000		2.5000
18								
19								
20								

Markups and Overrides

	Grid Total	Markup %	Markup \$	Total Markup	Extended Total	Billing Amount
Taxable						0.00
Non-Tax	750.00				750.00	750.00

Disc. Deposit Tax Taxable Total 750.00

Disc/Cr Paid Non-Tax Balance 750.00

Entered 06/16/2006 User supervisor Period 6 - 06/07 Link# Net Due 750.00

Enter the service invoice type (for posting the transaction)

Complete service management capabilities enable you to create dispatches, quotes, work orders, invoices, credits, service routes, and service contracts.

With Service Receivables, you can:

- Opt to generate billing during or at the end of a job.
- Export payroll hours from service work orders to payroll.
- Display Service Dispatch in 15-minute, hourly, or daily increments.
- Display work orders with user-defined color codes showing client, priority, and zip code.

Inventory

Keeping accurate inventory is easy with Sage Master Builder. Know what you have and don't have in stock. Take the guesswork out of ordering and stocking by producing reorder reports. Accurately track inventory, whether for a central warehouse, for several locations, and/or for service trucks.

Manage basic stock and serialized items for all locations, bin numbers, Materials Safety Data Numbers (MSDN), and manufacturer identifications. You can also apply inventory to a job, re-price inventory, post shrinkage, or create finished goods inventory from stock items and labor.

With Inventory, you can:

- Elect to use LIFO, FIFO, or WAC (weighted average cost) inventory valuation.
- Restock trucks with automated restocking reports.
- Use material order reports to create purchase orders to vendors.
- Track inventory by location and serial number.
- Plan upcoming purchases using resource reports from service work orders.

Easily track inventory movement between locations, place stock on hold, and automatically generate inventory reorder reports.

Analysis and Reporting

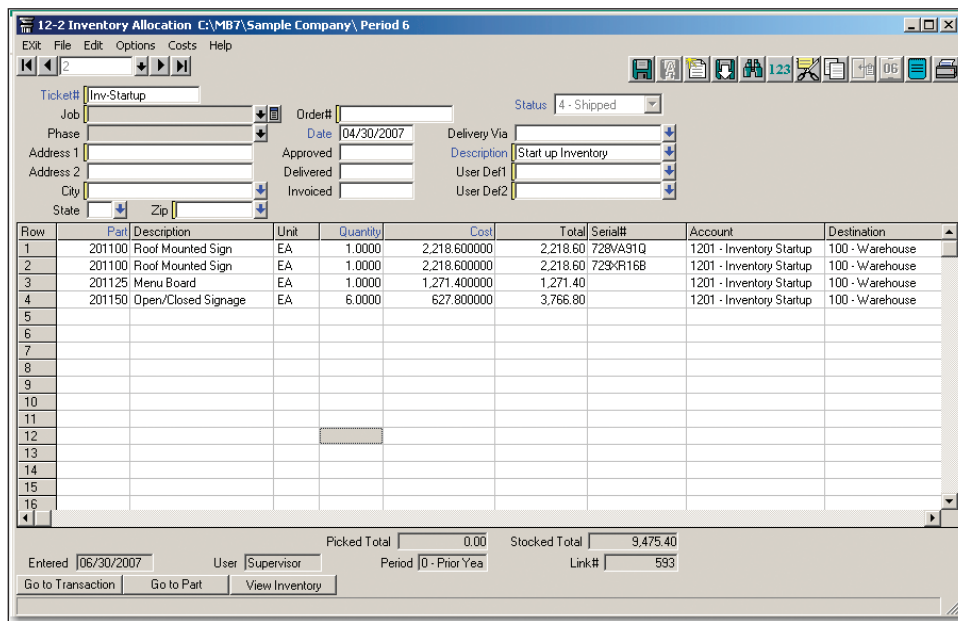
Check the overall financial health of your company at a glance —quickly and efficiently—with the Executive Dashboard. View the details of key business metrics with the drill-down capability.

Easily generate graphs of trends and ratios to identify and analyze your company's finances for fast, effective financial reviews.

Drill down multiple levels to record and transaction detail easily gaining visibility into the “why” behind the numbers. Choose from more than 1,000 professionally designed reports with easy-to-enter selection criteria, or let Report Writer help you create your own.

Simplify the difficult task of monitoring work done off-site and tracking equipment located at a client's site with reports such as Client List, Service Income Journal, Service Client Documents, Service Aging, Service Call Sheet and Service Ledger.

Multiple Inventory reports keep you informed and protect valuable assets with multiple inventory reports such as Inventory Allocation, Allocation List, Quantity on Hand, Value Report, Inventory Ledger, and Stock Location Report.



End-to-end solutions. Expert advice. Ongoing support. That's Sage 360.

Sage Software supports the needs, challenges, and dreams of 2.7 million small and mid-sized business customers in North America through easy-to-use, scalable and customizable software and services. Sage Software is a subsidiary of The Sage Group plc, a leading international supplier of business management software and services formed in 1981 and listed on the London Stock Exchange since 1989.

15195 NW Greenbrier Pkwy
Beaverton, OR 97006-5701
800-628-6583

